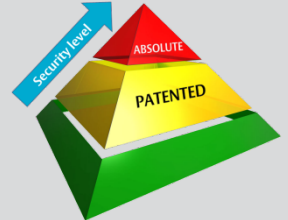


CLIQ Remote Key

Intelligent key management
Access at a distance



Application

CLIQ Remote makes intelligent, flexible and high security master key systems possible. The key's mechanical design creates the basic foundation made up of different security zones in the same way as in mechanical master key systems. The electronic programming of the keys gives authorization to individuals or to a group of individuals.

CLIQ Remote brings access control flexibility to the master key system world.

Intelligent locking systems gives control over all keys, which can easily be upgraded and can be tailor-made to suit any needs. Codes are never repeated worldwide, every system is unique.

CLIQ technology's basic idea is the creation of a lock system that retains a high level of security despite upgrading, alterations or expansion. Even after many years of use by a continual flow of new tenants, new employees or changes occurring in the workplace, the level of security will remain the same.

Meets requirements according to: SSF 3522, class 3 * 5 **
SS-EN1303 Grade 6 / D
EN 15684: 2012 Grade 2

Features

- Electronic access control without wiring
- Cost effective one key solution
- Patented Key Control
- Audit trails stored in both keys and cylinders
- Flexible access permissions
- Sealed Electronics: IP57 rated
- Access permissions can be updated remotely
- Easily replaced standard battery (CR2025)
- Dual security: mechanical and electronic
- Battery lifetime: 5 years under normal use 50 times/day
3 years for frequent use 100 times/day
- CE and RoHS approved
- EMC tested according to EN61 000-6-2, 3 (2014/30/EU)
- User communication: Audible tone/Light signals (LED)
- Operating Temperatures:
-40° F to 130° F
-10° C to 80° C

* SSF 3522 class 5 valid only for round cylinder 59S12.

** All components belonging to the locking device (such as lock cases, striking plates and door reinforcement) must at least meet the requirements of the locking device according to SSF 3522nd

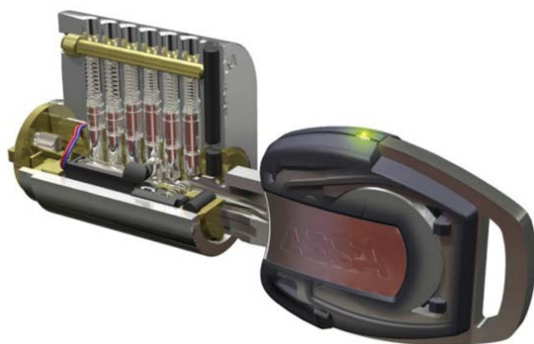
ASSA[®]
ASSA ABLOY

ASSA ABLOY, the global leader
in door opening solutions.

CLIQ Remote Key

Intelligent key management

Access at a distance



Function

Simple operation, sophisticated result

1. The key is inserted into the cylinder.
2. The cylinder is powered up by the battery in the key.
3. Encrypted information is transferred between the key and the cylinder.
4. The key will be granted access if:
 - The key is active at the time
 - The time schedule on the key allows the key to access the cylinder at the time
 - The key is listed in the cylinder's list of authorized keys
 - The mechanical coding allows the key to open the cylinder
5. An audit trail of the key being inserted in the cylinder is saved in the key as well as in the cylinder. Time, date, key-ID and cylinder-ID and result is stored in the audit trails.

Design:

- Master C-Key: Blue
- Setup Key: Red
- User Key: Chrome
- User Key: Color coding
Yellow, Orange, Brown, White, Green, Blue, Red, Gray

Audit trails

- 100 authorized/ unauthorized events
- 10 foreign events (keys from other systems)
- All logs are time stamped
- Roles can be used to managed access rights to read audit trails
- Audit trails are kept in a non-volatile memory and are saved even if the battery is removed.
- Encrypted (3DES) communication

Color-coded LED indicators and sound

Green: Authorized
Red: Unauthorized
Red, green, red: Authorized without valid schedule, or not validated.

Low battery: Tree long green

*one audible signal sounds for each indication

Energy supply

- Battery status can be viewed in the key management software.
 - Battery lifetime is 5 years under normal use 50 times a day, and 3 years frequent use above 100 times a day.
 - If the battery change lasts for more than 30 seconds the key must be revalidated or programmed to keep its authorizations.
 - Lithium standard battery 2025 + 3.0V
 - At + 2,8V The Key Indicated battery change
 - At + 2,7V The Key loses its authorizations
- * For guaranteed battery life use batteries recommended by ASSA
Article Number: 88 04 74

ASSA
ASSA ABLOY

ASSA ABLOY, the global leader in door opening solutions, dedicated to satisfying end-user needs for security, safety and convenience.

ASSA AB
P.O. Box 371
SE-631 05 Eskilstuna
Sweden

phone +46 (0)16 17 70 00
fax +46 (0)16 17 70 49

Customer support:
phone intl. +46 (0)16 17 71 00
phone nat. 0771-640 640
fax +46 (0)16 17 73 72
e-mail: helpdesk@assa.se

www.assa.se

Calendar and time functions

- Access to specific days / weeks
- Start / stop times can be set
- Time interval for validation function
- Active Date / Time
- Automatic reminder to return keys

Compatibility

- ASSA CLIQ Cylinder
- ASSA CLIQ Padlock
- ASSA Lock case: Modul, Connect-series
- ASSA Motor lock: hook bolt, Bolt, Exit devices, Panic exit devices

Name	Masterkey
Marking	A-1-5
Battery status	



The product may not be modified in any way except in accordance with the changes described in the manual.
For battery replacement, see ASSA designated instruction. Do not store the key in sub zero degrees.
Do not expose the key to fracture, mechanical shock or electric shock (ESD)

