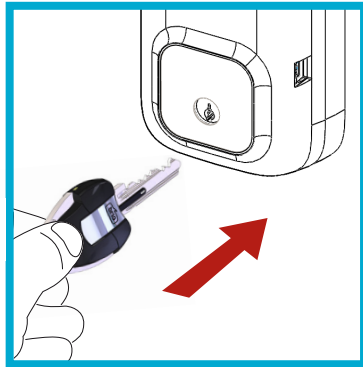


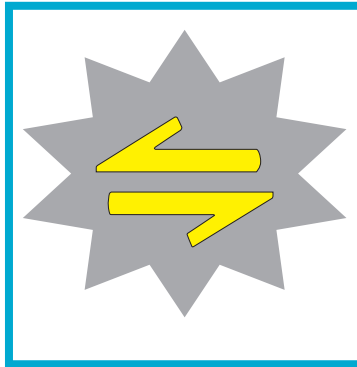
CLIQ Remote

CLIQ™

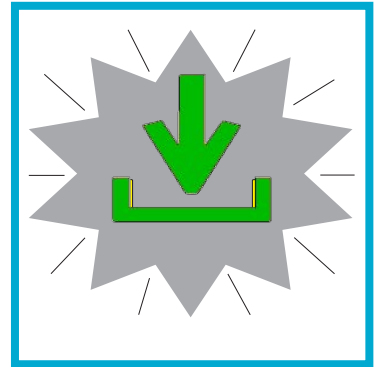
Key updater user instructions



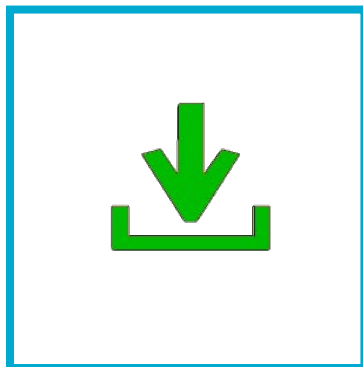
1. Insert the key into bottom of the keyway, leave the key there.
Note! Don't turn the key.



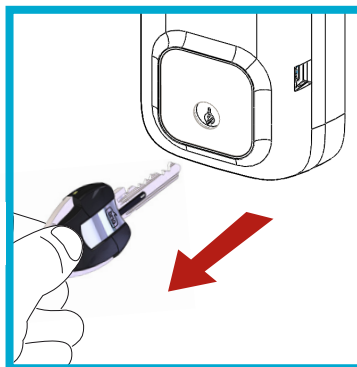
2. The key searches to contact the CLIQ Remote server. Yellow light.



3. The key is programmed while the symbol flashes green. Maximum time 1 minute.



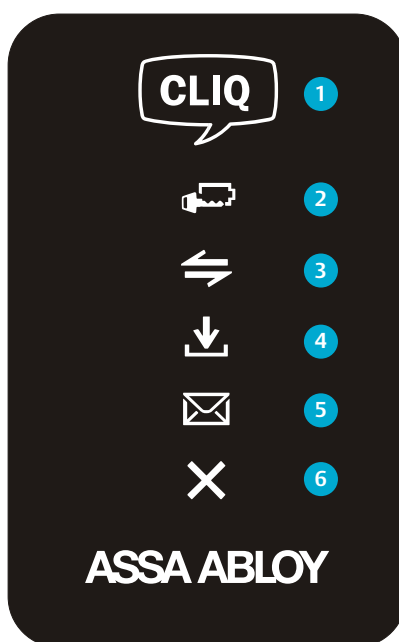
4. Programming is done, wait for a constant green light and an audible beep.



5. Remove the key from the keyway.

When the key is programmed log-files are transferred, and the time and date in the key will be synchronized.

ASSA
ASSA ABLOY



Indications: Wall PD

- 1 When the CLIQ logo light is solid the Wall PD is ready to be used. If the light is blinking, Wall PD is not function ready. In the case contact the system administrator.
- 2 Level of battery - If indication is lit, the battery level of the key is low, change the battery.
- 3 Connection to Remote server - When indication is flashing the Wall PD is contacting the Remote server. When indication is solid the connection has been established.
- 4 Key writing - When indication is flashing key is programmed. Do not remove key at this stage. Key programming is finished when indication is solid and the Wall PD gives an audible beep.
- 5 Message - If the system administrator is using e-mail postings for informing the key holders there might be an indication of an e-mail sent. The E-mail contains the keys validity, schedule and authorizations.
- 6 Error - Red light and three audible beeps. An error occurred. Remove the key from keyway and re-insert it after couple of seconds. If the error persists, contact the system administrator.